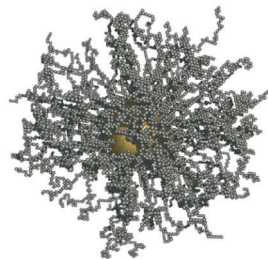


Collect. Czech. Chem. Commun.
2008, 73, 293–313

**The Use of Monte Carlo Simulations
 for the Interpretation of Light Scattering
 and Fluorescence Data on Self-Assembling
 Polymer Systems in Solutions**

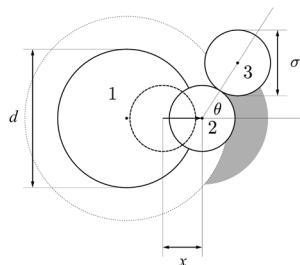
Pavel Matějčíček, Filip Uhlík, Zuzana Limpouchová and
 Karel Procházka



Collect. Czech. Chem. Commun.
2008, 73, 314–321

**New Approximate Analytical Formula
 for the Solute–Solvent Contact
 Distribution Function in an Infinitely
 Dilute Binary Hard-Sphere Mixture**

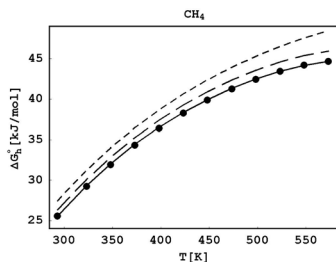
Stanislav Labík and William R. Smith



Collect. Czech. Chem. Commun.
2008, 73, 322–343

**Modeling Approaches to Hydration
 Properties of Aqueous Nonelectrolytes
 at Elevated Temperatures and Pressures**

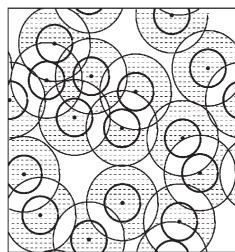
Josef Sedlbauer



Collect. Czech. Chem. Commun.
2008, 73, 344–357

**Statistical Geometry and Cavity
 Correlations in the Hard Sphere Fluid**

Robin J. Speedy and Richard K. Bowles

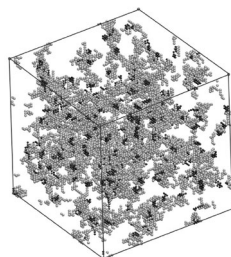


Collect. Czech. Chem. Commun.

2008, 73, 358–371

Self-Assembly of Heteroarm Star Copolymers Studied by Lattice Monte Carlo Simulation

Jitka Havránková, Zuzana Limpouchová and Karel Procházka

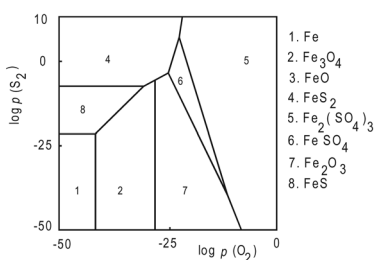


Collect. Czech. Chem. Commun.

2008, 73, 372–387

Topology of Potential Phase Diagrams of Partially Open Condensed System

Petr Voňka, Jindřich Leitner and David Sedmidubský

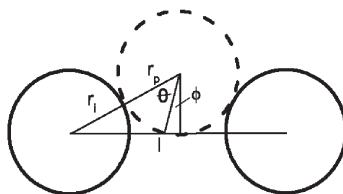


Collect. Czech. Chem. Commun.

2008, 73, 388–400

Radial Distribution Function in the Hard Sphere Mixtures

Tomáš Boublík

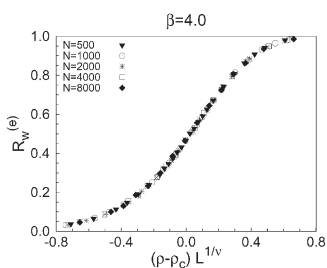


Collect. Czech. Chem. Commun.

2008, 73, 401–412

On Universality of the Wrapping Percolation Transition

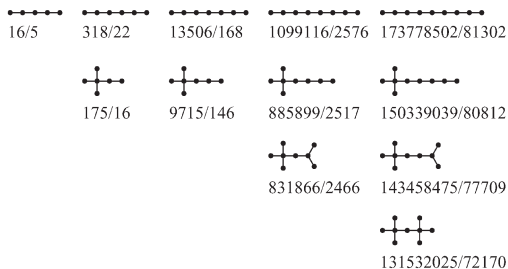
Jiří Škvor and Ivo Nezbeda



Collect. Czech. Chem. Commun.
2008, 73, 413–423

Fluids of Hard Nonspherical Molecules. I. Higher Virial Coefficients

Magda Francová, Jiří Kolafa,
 Pavel Morávek, Stanislav Labík and
 Anatol Malijevský



Collect. Czech. Chem. Commun.
2008, 73, 424–438

Some Explicit Results for the Mean Spherical Approximation for Mixtures of Yukawa Fluids

Douglas J. Henderson and Osvaldo H. Scalise

