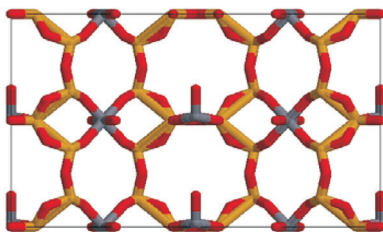


Collect. Czech. Chem. Commun.
2010, 75, 145–164

A Molecular Simulation Study of Adsorption of Nitrogen and Methane in Titanium Silicate (ETS-4)

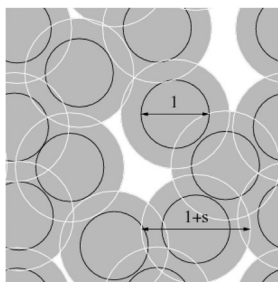
Flor R. Siperstein, Martin Lísal and John K. Brennan



Collect. Czech. Chem. Commun.
2010, 75, 165–173

Exact Analytical Formula for a Fifth Virial Coefficient of a Hard-Sphere Mixture at Infinite Dilution for Small Diameter Ratios

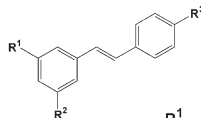
Stanislav Labík



Collect. Czech. Chem. Commun.
2010, 75, 175–186

Modified Approach for Preparing (E)-Stilbenes Related to Resveratrol, and Evaluation of Their Potential Immunobiological Effects

Jan Šmidrkal, Juraj Harmatha, Miloš Buděšínský, Karel Vokáč, Zdeněk Zidek, Eva Kmoníčková, Roman Merkl and Vladimír Filip

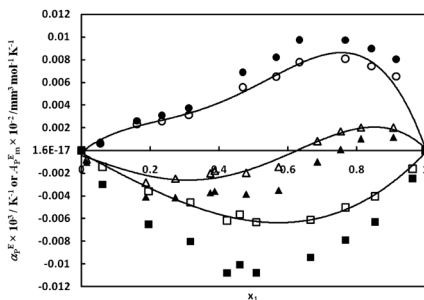


- | | R ¹ | R ² | R ³ |
|--------------------------------|------------------|------------------|------------------|
| 1. resveratrol | OH | OH | OH |
| 2. pterostilbene | OCH ₃ | OCH ₃ | OH |
| 3. pinosylvin | OH | OH | H |
| 4. resveratrol-4'-methyl ether | OCH ₃ | OH | OH |
| 5. 3,4',5-trimethoxystilbene | OCH ₃ | OCH ₃ | OCH ₃ |

Collect. Czech. Chem. Commun.
2010, 75, 187–200

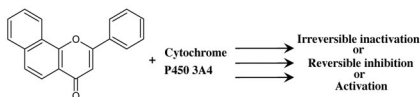
Non-Ideal Behaviour of Binary Liquid Mixtures and Different Approaches to Calculate Ideal Expansibility

Harsh Kumar



Collect. Czech. Chem. Commun.
2010, 75, 201–220

Cytochrome P450 3A Activities and Their Modulation by α -Naphthoflavone *in vitro* are Dictated by the Efficiencies of Model Experimental Systems



Lucie Bořek-Dohalská and Marie Stiborová

Collect. Czech. Chem. Commun.
2010, 75, 221–241

Influence of a Small Amount of Tethered Chains on Wetting Transitions: A Density Functional Approach

Małgorzata Borówko, Andrzej Patrykiewicz,
Stefan Sokołowski and Tomasz Staszewski

